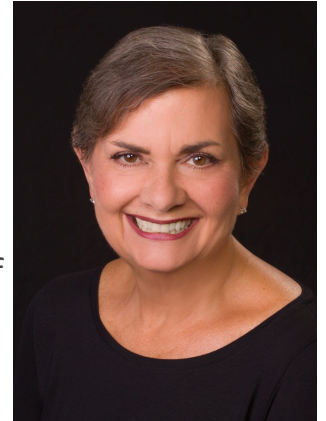


Exciting News from the Illinois Affiliate of Learning Forward



JOIN PROFESSIONAL LEARNING COLLEAGUES MAY 2 IN NORMAL!

The Learning Forward Illinois Affiliate is pleased to share an upcoming event featuring Joellen Killion, consultant and author for Learning Forward International. As we share a commitment to quality professional learning, it is our hope that we fill the room with leaders such as yourself who desire to enhance their knowledge and methods of high quality learning systems. It is our hope to support the Illinois Affiliate's effort to build a statewide network of individuals pursuing a professional learning system reflective of high standards.



High-Impact Professional Learning Programs with Results-Based Evaluations

Individuals and entities responsible for providing professional learning share the goal of making sure that the time, effort, and resources invested in professional learning programs is truly making an impact on educator effectiveness and student achievement. Joellen Killion will guide us step by step through the rigors of producing an effective, in-depth, results-based evaluation to measure effectiveness and retain stakeholder support.

OUTCOMES FOR THE DAY:

1. Understand the process for planning and implementing effective professional learning based on needs.
2. Use the five levels of outcomes for professional learning to identify initial and intermediate outcomes to close the gap between professional learning and student achievement.
3. Understand the 8-step evaluation process for evaluating professional learning.

May 2, 2019 9:00 to 3:30
ISU Alumni Center, 1101 N Main St, Normal, IL 61790
TO REGISTER ONLINE VISIT: bit.ly/2GhOgGX

REGISTRATION COSTS:

\$50 for Learning Forward Illinois members
\$85 for non-members (Includes membership)
\$95 for non-members (No membership included)
\$35 to include a copy of Joellen's book, *Assessing Impact* (available upon arrival at workshop)

Onsite registration cost will be \$125.

For those who would need accommodations the evening prior to the event, please visit: <https://www.marriott.com/hotels/travel/bmimc-bloomington-normal-marriott-hotel-and-conference-center/>